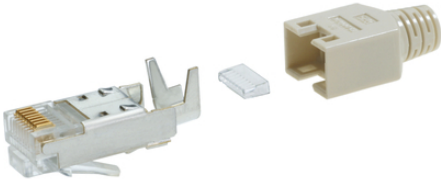


## Connector RJ45 CAT.5e Hirose TM11

RJ45 field-mountable connector, qualified for 100Mbit - transmission  
suitable for industrial use and office environment  
Hirose TM11



### Product features

Suitable for cross section (AWG24-27)  
Connection type: crimp  
Core insulation: app. 0,9-1,0 mm  
Max. cable diameter: 5.8 mm  
Anti-kink protection: beige  
Set includes: RJ plug, anti-kink protection and guide plate  
Shielded version

### Technical Data

Classification:

ETIM 5.0 Class-ID: EC002641

ETIM 5.0 Class-Description: Modular connector (industrial connector)

### Note

Hirose is a registered trademark of the HIROSE ELECTRIC Group

Other colours are available upon request.

Photographs are not to scale and do not represent detailed images of the respective products.

Prices are net prices without VAT and surcharges. Sale to business customers only.



## Connector RJ45 CAT.5e Hirose TM11

Article number	Article designation
CE6321	Connector RJ45 CAT.5e Hirose TM11

Last Update (05.06.2017)

©2017 Lapp Group - Technical changes reserved

Product Management [www.lappkabel.de](http://www.lappkabel.de)

You can find the current technical data in the corresponding data sheet.  
PN 0456 / 02\_03\_16